

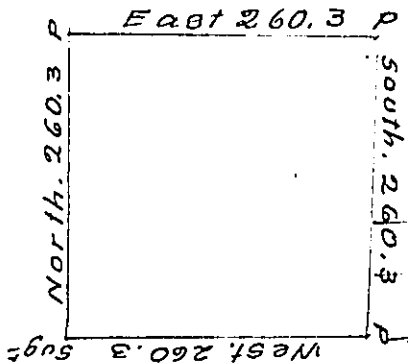


75

C. 216. 139.

C. 222. 156.

John Stille



C. 192. 283

C. 219. 66

John Stull

C. 222. 31.

The above is the draught of a survey made March 11<sup>th</sup> 1795  
 in pursuance of a warrant granted to John Steinmetz on  
 the 14<sup>th</sup> day of April 1792. Situate Northwest of the Ohio  
 River on the waters of Bearer Creek, adjoining land gran-  
 led to John Stull, called Judenburg, containing 400 acres  
 with the usual allowance of 6 p. Cent &c.

Jno Hoge D.S.

Daniel Brodhead Esq. S.G.

IN TESTIMONY that the above is a copy of the original remaining on file in  
 the Department of Internal Affairs of Pennsylvania, made  
 conformably to an Act of Assembly approved the 16th day of  
 February 1833, I have hereunto set my hand and caused  
 the Seal of said Department to be affixed at Harrisburg,  
 this seventeenth day of January 1907

*Leaac D. Brown*  
 Secretary of Internal Affairs.